



Presented in  
*Pearl*

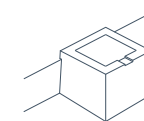


# The Muse

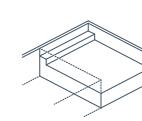
*with Raised Spa*

The Muse boasts an extraordinary array of stunning features that are further heightened through the addition of a raised spa. Treat your tired and tense muscles to the ultimate in rejuvenation while you immerse yourself in the luxury of the heated spa water and accompanying spa jets.

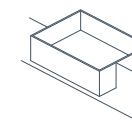
Further elevate this therapeutic environment by uplifting your mind and body, while you embrace the invigorating experience as you transition from the warmer water to the cooler water. The spa adjoining your swimming pool provides a relaxing space for you to unwind and decompress while your kids splash and play in their own area.



Raised Spa



Splash Deck



Flat Bottom Floor

## Sizes

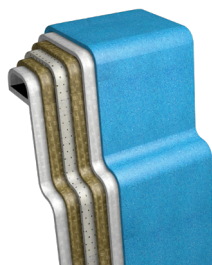
7.60m (L) x 3.80m (W) | Depth 1.40m

6.10m (L) x 3.80m (W) | Depth 1.40m

Spa Size 1.70m (L) x 1.40m (W) | Depth 0.95m

Size Note: Dimensions are of the pool shell only and may be rounded.





## Materials

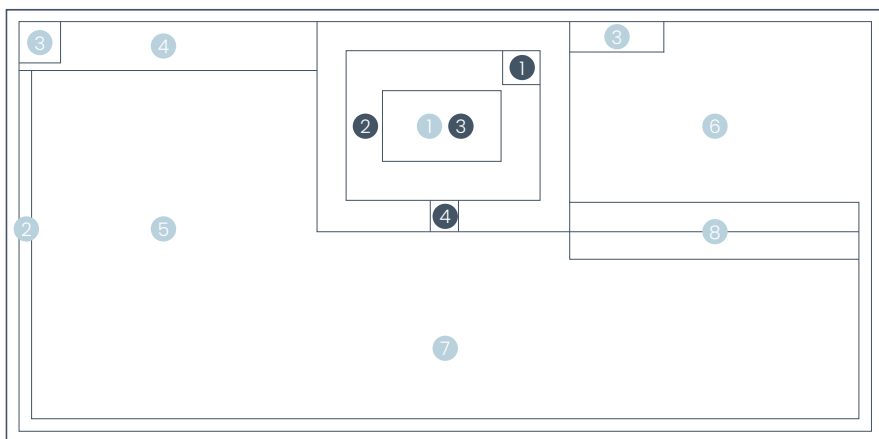
Nexus Pools are built using high-performance, corrosive-resistant vinyl ester resin within all layers of application, providing the highest level of structural integrity and protection against osmosis.

## Pool Features

- 1 Raised Spa
- 2 Wrap-around Safety Ledge
- 3 Dual Entry Steps
- 4 Bench Seat
- 5 Flat Bottom Floor
- 6 Splash Deck
- 7 Swimming Corridor
- 8 Steps into Pool

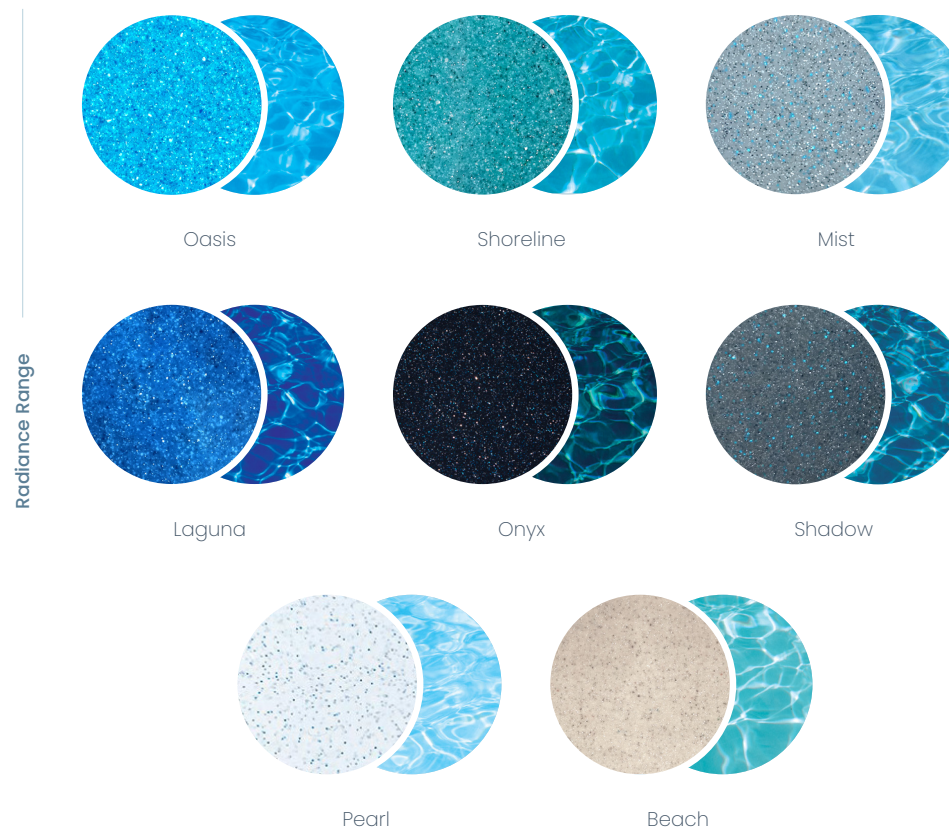
## Spa Features

- 1 Spa Entry Step
- 2 Wrap-around Seat
- 3 Spa Footwell
- 4 Spill-over Ledge



## Colour Range

Featuring industry leading colour technology from allnex, Nexus Pools' colour selection will set the tone in capturing memories and enhancing special life moments.



Colour Note: Colours are examples and are artist impressions only. Colours may vary from the finished product.

## Connect With Us

To learn more about the Nexus Pools range, contact your authorised dealership today!

1800 MY NEXUS

nexuspools.com.au

Check out our socials at @NexusPoolsGlobal



View The Muse with Raised Spa